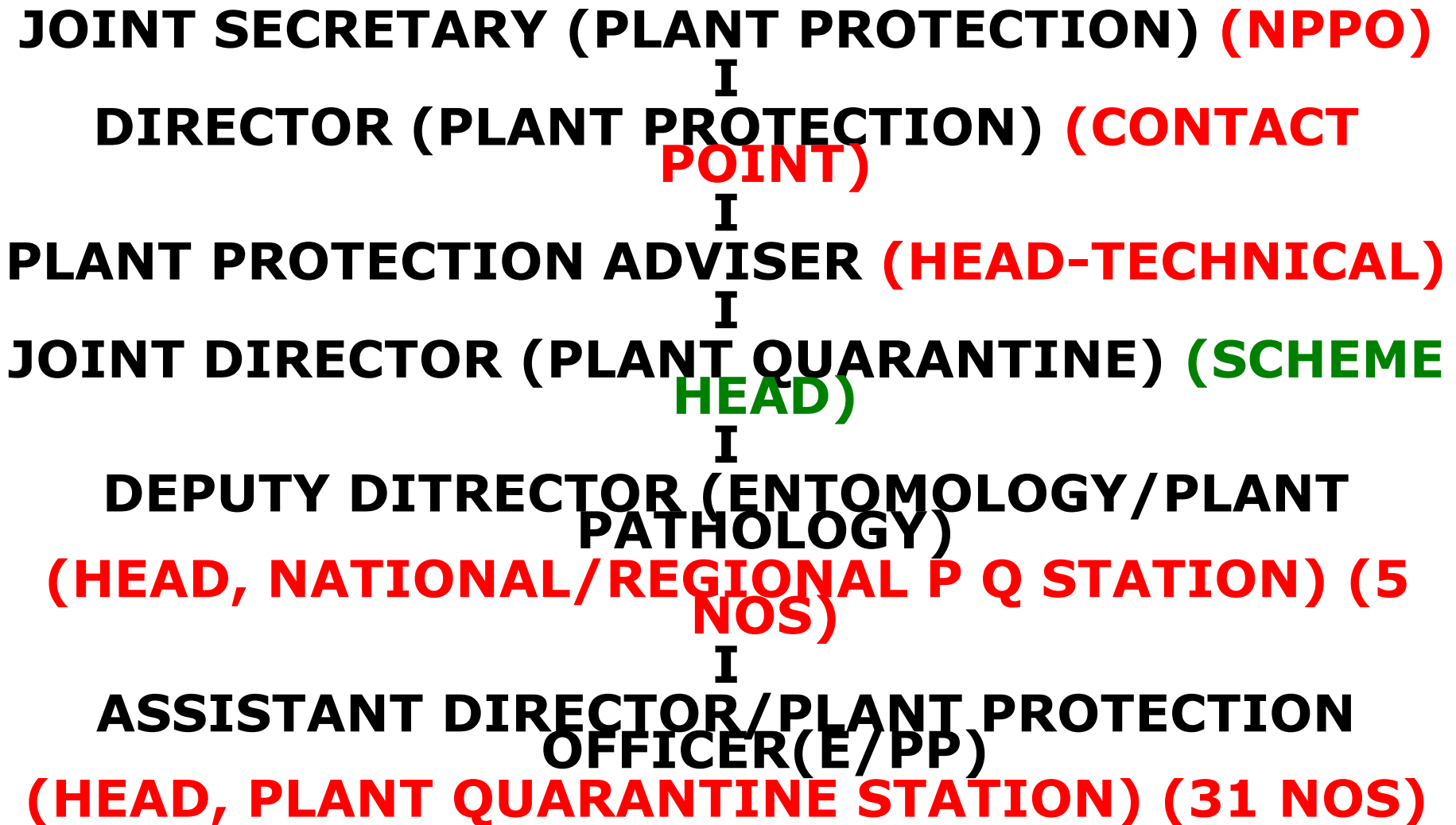
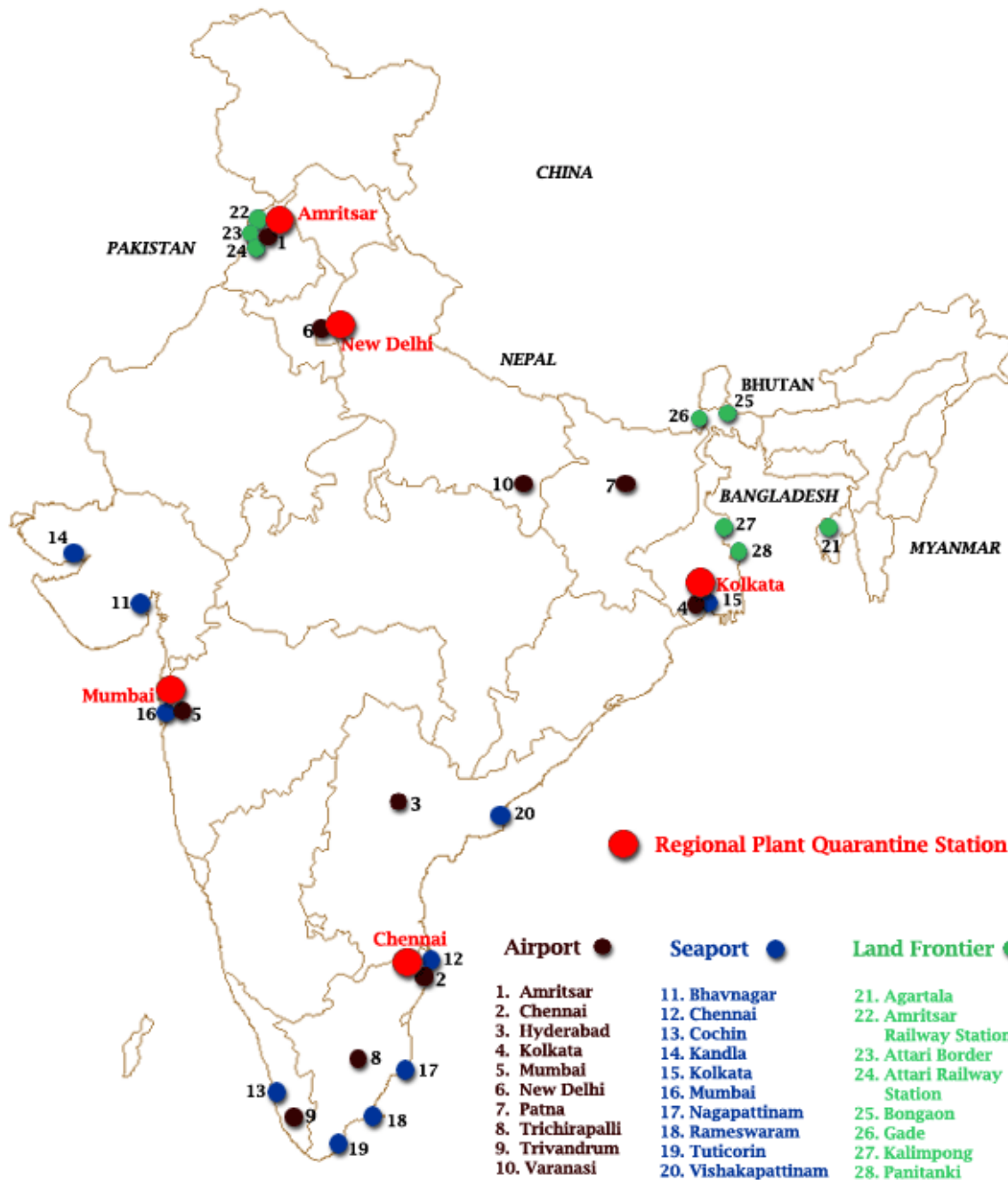


**INDIA'S PHYTOSANITARY REQUIREMENTS FOR  
IMPORT OF PULSES**

# ORGANISATIONAL CHART - NPPO (PLANT QUARANTINE)



# Plant Quarantine Network



- Total 36 PQ Stations
- 5 – Major/Regional Stns.
- International Airports - 11
- Seaports - 13
- Land Frontiers - 12

# PLANT QUARANTINE

- To prevent introduction and/or spread of pests into India
- Export certification as per IPPC.
- Implementation/ enforcement of “The Destructive Insect & Pests Act, 1914” and “Plant Quarantine (Regulation of Import into India) Order, 2003”.
- To conduct Pest Risk Analysis for allowing imports into India
- To conduct surveys for pests of quarantine significance for their control, containment and eradication.

# Plant Quarantine Order,2003

- ❖ 7 Chapters; 12 Schedules; 22 PQ Forms
- ❖ Import of all agricultural products (including pulses) are Restricted/regulated under Schedule V, VI & VII based on PRA
- ❖ Schedule V – 17 entries (Restricted)
- ❖ Schedule VI - 686 entries (Regulated)
- ❖ Schedule VII - 290 entries (No IP required)
- ❖ PSC from country of origin is must
- ❖ Import of pulses listed under Schedule VI of PQ Order,2003

## PQ ORDER,2003 & SPECIAL CONSIDERATIONS FOR PULSES

The phytosanitary inspection fee is charged @:

- Up to 2 kg. -Rs. 50/- plus Rs. 5/- per additional kg.
- Above 2 kg up to 100 kg.- Rs. 550/- plus Rs. 2/- per additional kg.
- Above 100 kg up to 1000 kg.- Rs. 550/- plus Rs. 2/- per addl kg.
- (iv) Above 1000 kg -Rs. 2500/- plus Rs.75/- per additional ton except in case of pulses;
- For pulses. -Rs. 2500/- plus Rs. 50/- per additional ton

(an exceptional consideration)

# The phytosanitary requirements for pulses

- The exporting country has to issue a PSC for each of the consignment.
- NPPO of the exporting country has to give additional declaration and comply with the special conditions of import and endorse these on PSC

The additional declaration pertains to freedom of the commodity from the pests, and

Special conditions refer to the phytosanitary treatment given to the commodity for ensuring pest freedom.

# General condition for import of food grains

As per Section 3 (12) - No consignment of food-grain is permitted to import with contamination of quarantine weeds, listed in Schedule-VIII of PQ Order, 2003 unless the said consignment has been devitalized by the exporting country and a certificate to that effect has been endorsed in the PSC.



## **Specific commodity-wise requirements:**

### **Peas (*Pisum spp.*)**

Import of pea grains for consumption is allowed from any country with the following conditions.

Free from:

(a) Stem and bulb nematode  
(*Ditylenchus dipsaci*)

(b) Pea cyst nematode  
(*Heterodera goettingiana*)

(c) Bruchids (*Bruchidius spp.*  
*Specularis impressithorax*)

Fumigation with Methyl bromide @ 32g/cu. m at @ 21°C and above under NAP and the treatment to be endorsed on phytosanitary certificate.

# Chickpea (*Cicer arietinum*)

- ❑ The import of chickpea grains for consumption is allowed from any country with the following conditions.
- ❑ Additional declaration – Not prescribed
- ❑ Fumigation with Methyl bromide @ 32g/cu. m at 21 °C and above under NAP and the treatment to be endorsed on phytosanitary certificate.

The import of Pigeon pea (*Cajanus cajan*) grains for consumption is allowed from the country with following conditions

Name of the country	Additional declaration	Special condition of import
(i) Australia (ii) Mozambique (iii) Myanmar (iv) Nepal	Free from <i>Richardia brasiliensis</i>	(i) Free from soil contamination. (ii) Fumigation by Methyl bromide at 32g per cubic meter for 24 hrs at 21 <sup>o</sup> C or equivalent
(v) China	Free from <i>Heterodera glycines</i> (Cyst nematode)	(i) Free from soil contamination. (ii) Fumigation by Methyl bromide at 32g per cubic meter for 24 hrs at 21 <sup>o</sup> C
(vi) Iran	Free from <i>Apomyelois ceratoniae</i> (carob moth)	(i) Free from soil contamination. (ii) Fumigation by Methyl bromide at 32g per cubic meter for 24 hrs at 21 <sup>o</sup> C
vii) Kenya	Free from: (a) <i>Melanagromyza chalcosoma</i> (pod fly) (b) <i>Richardia brasiliensis</i>	(i) Free from soil contamination (ii) Fumigation by Methyl bromide at 32 g per cubic meter for 24 hrs at 21 <sup>o</sup> C or equivalent
(viii) Pakistan (ix) Tanzania (x) Malawi (xi) Uganda	Nil	(i) Free from soil contamination. (ii) Fumigation with Methyl bromide at 32 g. per cubic metre for 24 hrs. at 21 <sup>o</sup> C and above or equivalent

# Process of phytosanitary inspection and release of the consignments

- On receipt of application for quarantine inspection, the application is registered. Documents viz., original import permit, original PSC, bill of entry, certificate of origin, bill of lading, invoice etc. are checked. After scrutiny of the application, inspector is deputed for drawing samples as per laid down procedure.
- No. of Containers sampled depends on size of the consignment, as under:
  - 01-10 containers -Minimum 2 containers
  - 11-25 containers -One in every five containers but not less than four
  - Above 25 containers -One in every eight Containers but not less than six containers

# DEROGATIONS FOR IMPORT OF PULSES

❖ Derogation on pre-export fumigation : MBr fumigation on arrival at entry point for imports from USA, Canada & France granted/extended every six months.

❖ Pulses imported from other countries without fumigation (or without complying with other phytosanitary conditions) are treated under relaxation provisions. To facilitate quick release of pulses consignments, PQ Stations have been authorized to grant relaxation and allow fumigation at the port of arrival after charging five times of normal fee.

Qty in lakh MT

<b>Total Pulses</b>	<b>2004-05</b>	<b>2005-06</b>	<b>2006-07</b>	<b>2007-08</b>	<b>2008-09</b>	<b>2009-10</b>	<b>2010-11</b>	<b>2011-12 (First adv. Est.)</b>
<b>Production</b>	<b>131.3</b>	<b>133.9</b>	<b>142.0</b>	<b>147.6</b>	<b>145.7</b>	<b>146.6</b>	<b>180.9</b>	<b>64.3 (kharif) + 130.5 (Rabi) = 194.8</b>
<b>Export</b>	<b>2.7</b>	<b>4.4</b>	<b>2.5</b>	<b>1.6</b>	<b>1.4</b>	<b>1.0</b>	<b>2.0</b>	
<b>Import</b>	<b>13.4</b>	<b>16.1</b>	<b>22.7</b>	<b>28.3</b>	<b>24.7</b>	<b>34.5</b>	<b>25.9</b>	<b>11.19 (April – July 2011)</b>
<b>Total domestic availability</b>	<b>142.0</b>	<b>145.6</b>	<b>162.2</b>	<b>174.3</b>	<b>169.0</b>	<b>180.1</b>	<b>204.8</b>	

(Qty in lakh MT)

<b>Tur</b>	<b>2005-06</b>	<b>2006-07</b>	<b>2007-08</b>	<b>2008-09</b>	<b>2009-10</b>	<b>2010-11</b>	<b>2011-12 (First adv. Est.)</b>
<b>Production</b>	<b>27.4</b>	<b>23.1</b>	<b>30.8</b>	<b>22.7</b>	<b>24.6</b>	<b>28.9</b>	<b>29</b>
<b>Export</b>	<b>0.3</b>	<b>0.2</b>	<b>0.02</b>	<b>0.01</b>	<b>0.3</b>	<b>Neg</b>	
<b>Import</b>	<b>2.5</b>	<b>3.1</b>	<b>5.0</b>	<b>3.9</b>	<b>3.5</b>	<b>0.80</b>	<b>0.35(April – July 2011)</b>
<b>Total Availability</b>	<b>29.6</b>	<b>26.0</b>	<b>35.78</b>	<b>26.59</b>	<b>27.8</b>	<b>29.70</b>	<b>29.35</b>

(Qty in lakh MT)

<b>Gram</b>	<b>2005-06</b>	<b>2006-07</b>	<b>2007-08</b>	<b>2008-09</b>	<b>2009-10</b>	<b>2010-11</b>	<b>2011-12 target</b>
<b>Production</b>	<b>56.0</b>	<b>63.3</b>	<b>57.5</b>	<b>70.6</b>	<b>74.8</b>	<b>82.5</b>	<b>75</b>
<b>Export</b>	<b>0.4</b>	<b>0.6</b>	<b>1.6</b>	<b>1.3</b>	<b>0.95</b>	<b>2.0</b>	
<b>Import</b>	<b>1.30</b>	<b>1.5</b>	<b>2.0</b>	<b>3.4</b>	<b>1.0</b>	<b>0.17</b>	<b>0.15(April – July 2011)</b>
<b>Total Availability</b>	<b>56.90</b>	<b>64.20</b>	<b>57.90</b>	<b>72.7</b>	<b>74.85</b>	<b>80.67</b>	



Quantity in lakh MT)

<b>Urad and Moong</b>	<b>2005-06</b>	<b>2006-07</b>	<b>2007-08</b>	<b>2008-09</b>	<b>2009-10</b>	<b>2010-11</b>	<b>2011-12 target</b>
<b>Production</b>	<b>22.0</b>	<b>25.6</b>	<b>29.8</b>	<b>22.1</b>	<b>19.2</b>	<b>35.6</b>	<b>30.2</b>
<b>Export</b>	<b>Neg</b>	<b>Neg</b>	<b>Neg</b>	<b>Neg</b>	<b>Neg</b>	<b>Neg</b>	<b>Neg</b>
<b>Import</b>	<b>3.3</b>	<b>3.3</b>	<b>4.4</b>	<b>7.1</b>	<b>4.3</b>	<b>1.45</b>	<b>2.00 (April – July 2011)</b>
<b>Total Availability</b>	<b>25.3</b>	<b>28.9</b>	<b>34.2</b>	<b>29.2</b>	<b>23.5</b>	<b>37.05</b>	<b>25.7</b>

(Quantity in lakh MT)

	<b>2005-06</b>	<b>2006-07</b>	<b>2007-08</b>	<b>2008-09</b>	<b>2009-10</b>	<b>2010-11</b>	<b>2011-12 target</b>
<b>Other Kharif</b>	<b>5.4</b>	<b>7.1</b>	<b>9.5</b>	<b>8</b>	<b>5.1</b>	<b>13.1</b>	<b>12</b>
<b>Other Rabi</b>	<b>23.1</b>	<b>22.9</b>	<b>20</b>	<b>22.3</b>	<b>22.9</b>	<b>20.9</b>	<b>22</b>
<b>Total Other</b>	<b>28.5</b>	<b>30</b>	<b>29.5</b>	<b>30.3</b>	<b>28</b>	<b>34</b>	<b>34</b>
<b>Export</b>	<b>2.8</b>	<b>1.2</b>	<b>Neg</b>	<b>Neg</b>	<b>Neg</b>	<b>Neg</b>	<b>Neg</b>
<b>Import</b>	<b>12.74</b>	<b>17.83</b>	<b>21.55</b>	<b>14.4</b>	<b>23.22</b>	<b>19</b>	<b>8.69 (April-July)</b>
<b>Total Availability</b>	<b>38.44</b>	<b>46.63</b>	<b>51.05</b>	<b>44.7</b>	<b>51.22</b>	<b>53</b>	<b>42.69</b>

## Issues of Concern

### **Invalid / Incomplete PSC**

- Non endorsement of additional declaration
- Non endorsement of special conditions of import
  - ✓ Freedom from weed seeds
  - ✓ Freedom from soil
- Non endorsement of IP number on PSC

# Issues of Concern

- **Improper fumigation**
  - ❖ Fumigation with non prescribed chemicals (Phosphine/ CO<sub>2</sub> etc.)
  - ❖ Insufficient dose of fumigant
  - ❖ Insufficient duration of treatment

**THANK YOU**

